



VALLA 40D - TRX MOBILE TRACKED CRANE Max Capacity 4 t.

DIESEL POWERED



ENGINE: Diesel HP 51, 4 cylinders, water cooled.

TRANSMISSION: Automatic (hydrostatic). Max speed 4 km/h.

CRANE FRAME: Fabricated from preformed and welded steel plate with built-in counterweight.

TRACKED UNDERCARRIAGE: On rubberized steel tracks. Expandible track system through 4 hydraulic cylinders. Two variable hydraulic motors.

BOOM: Fabricated from preformed and welded steel plate with 4 hydraulic telescoping sections fitted with adjustable nylon wear pads. Boom slewing for unlimited and continuous 360°.

WINCH: Hydraulically operated.

HYDRAULIC SYSTEM: Powered by gear pump through 4 valves distributor lever operated, one for raising/lowering, one for extending/retracting, one for slewing the boom. Fitted with safety valves. Max pressure 200 bar.

DRIVER'S OVERHEAD GUARD: Steel frame with metal checker plate and full visibility.

WEIGHT: Kg. 5.000~.

OPTIONAL EXTRAS: L.M.I. (electronic Load Moment Indicator), hydraulic chain hoist, man bucket, remote control, metal/glass enclosed cab, manual jib extension, LPG conversion.

Valla S.p.A.

Via Piacenza, 45 - 29010 Calendasco - Piacenza - ITALIA

Tel. 0039 0523 762025 - 762004 - Fax 0039 0523 760531

Internet: www.valla.com - email: info@valla.com

Printed by Valla S.p.A.

March 2006

Data above are subject to be changed without any previous notice.

The crane complies with following international standards:

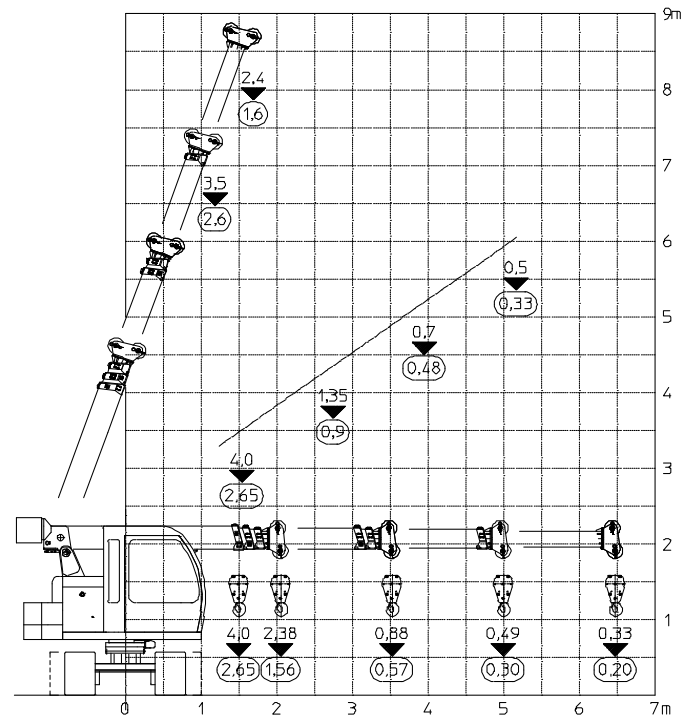
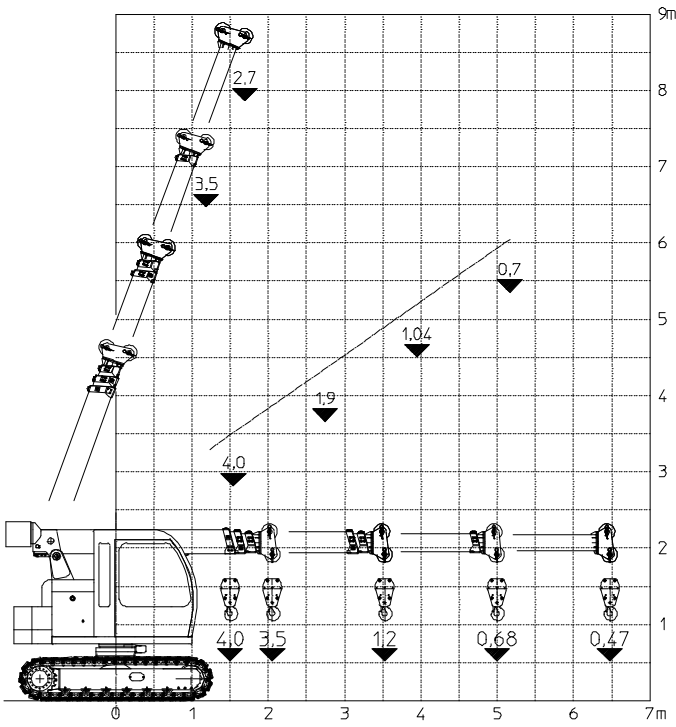
- I.S.P.E.S.L.
- DIN 15018(1,3) - 15019 (1) Class H2 B3
- ANSI - 1994



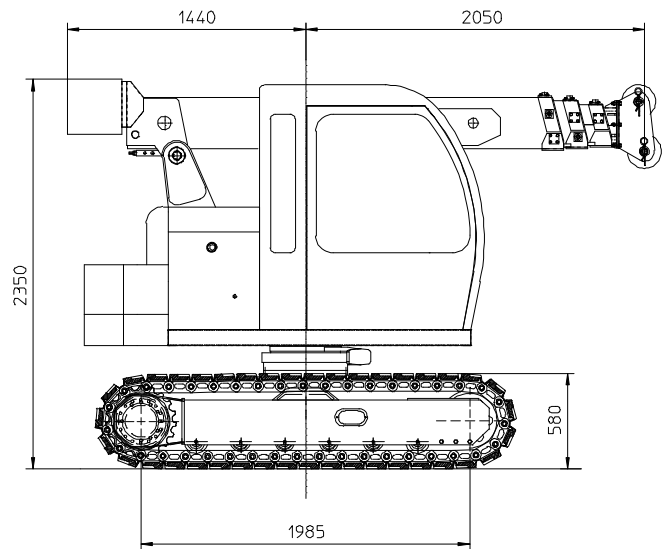
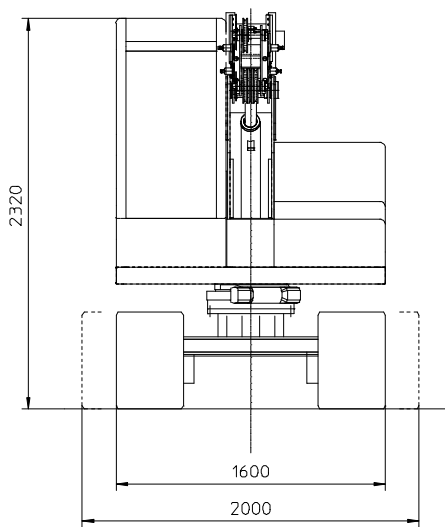
360° capacities with retracted tracks



360° capacities with extended tracks



MODEL 40D TRX



Valla S.p.A.

Via Piacenza, 45 - 29010 Calendasco - Piacenza - ITALIA
 Tel. 0039 0523 762025 - 762004 - Fax 0039 0523 760531
 Internet: www.valla.com - email: info@valla.com

